



TiO₂ Composite Pigments for Powder Coatings



ChemQuest Powder Coating Research

“ChemQuest Powder Coating Research has thoroughly tested TiO₂ Composite Pigments and has found them to provide excellent extension of titanium dioxide and also improved dispersion of tinting pigments. These enhancements come with no reduction in gloss, durability or mechanical properties of the film.”



Kevin Biller, President
www.powdercoatingresearch.com



“Optimize Without Compromise”

FP-Pigments



Global manufacturer of TiO₂ Composite Pigments and speciality minerals.

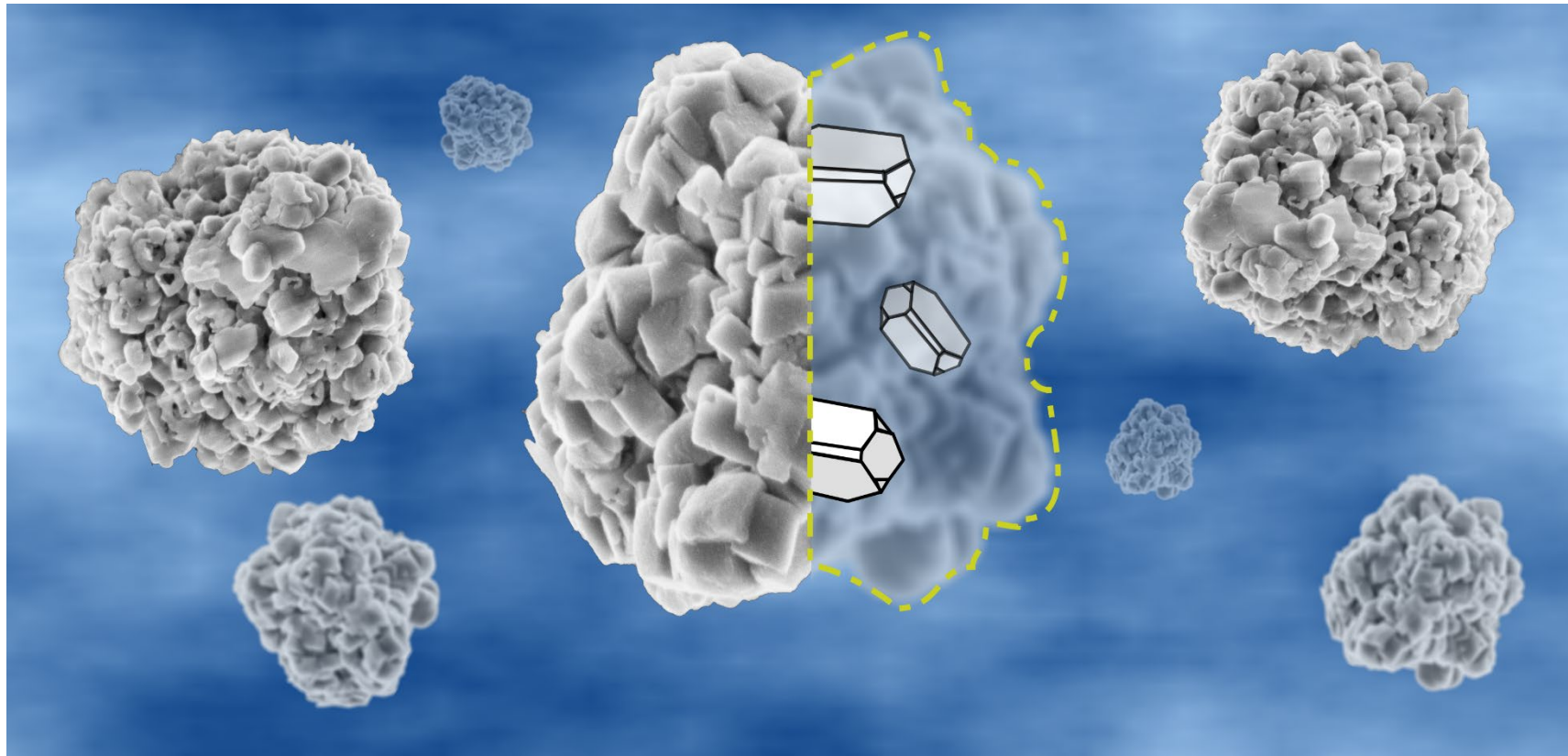
High quality pigments that enable a partial substitution of the titanium dioxide that is used in a wide range of applications.

Reformulate at lower cost with no compromise in opacity, color and overall performance.

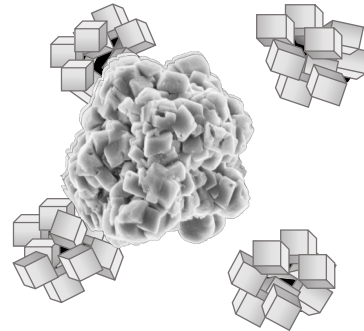
Unique combination of multiple scattering and performance enhancing techniques allows the TiO₂ Composite Pigments to work in conjunction with functional extenders.

Composite pigment products for the coatings, plastics, inks and paper industries

- These composite pigments are designed to provide equivalent optical properties of coatings while maintaining other coating characteristics and requirements at reduced cost.



Manufacturing of TiO₂ Composite Pigments



3. TiO₂ composite pigment is formed

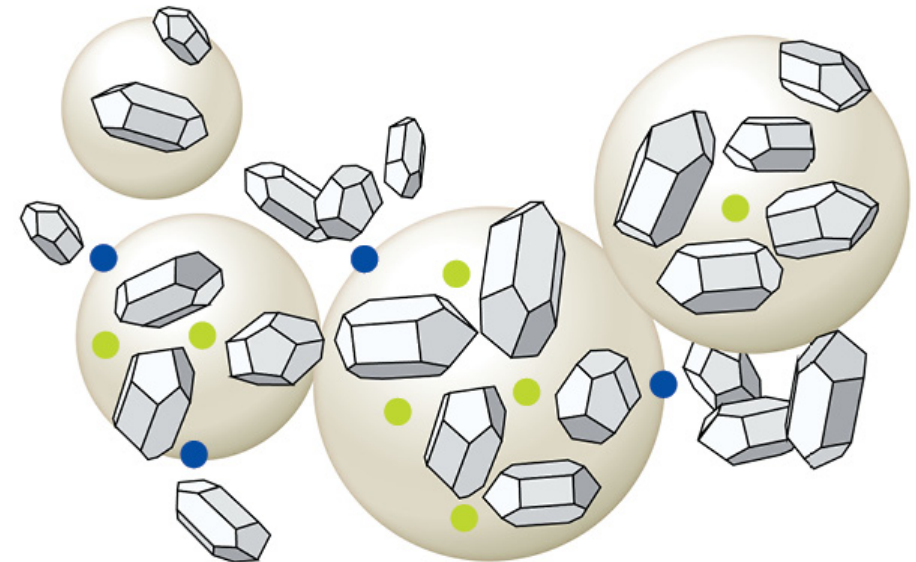
How Do TiO₂ Composite Pigments Work?

Composite pigments optimize the use of TiO₂ without compromise.

This allows manufacturers to maintain optical and performance properties at a lower cost than TiO₂ alone.

Optimize hiding power by:

- Having a Refractive Index of 1.9
- Optimally spacing TiO₂ in the FP product
- Spacing loose TiO₂
- Creating air voids
- Increasing light scattering



● Spacing of TiO₂ particles within the composite

● Spacing of TiO₂ particles within the composite and loose TiO₂

- TiO₂ Composite Pigments are suitable for:

- Polyester/TGIC formulations
- Polyester/Primid formulations
- Epoxy/Polyester hybrid formulations
- Pure Epoxy formulations
- Acrylic formulations



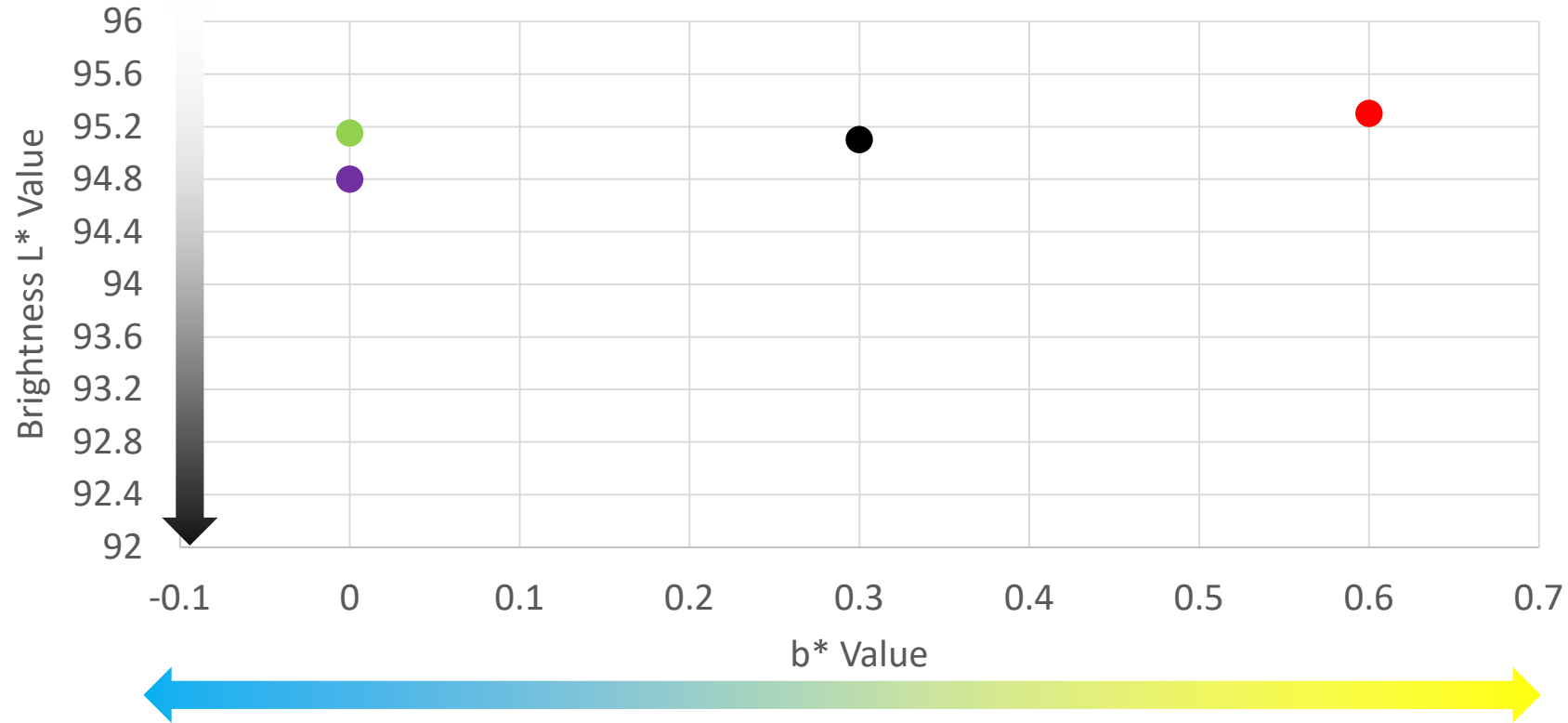
- At an optimized replacement ratio between 10 - 20%, TiO₂ composite pigments can be used for interior and general purpose exterior powder coatings
- They are also suitable for use in UV cured Powder Coatings where their reduced UV absorption, compared to TiO₂, can aid coating through-cure

Formulation and Processing Conditions

Materials	
Polyester Resin	Cytec Crylcoat 2441-2
Crosslinker	Triglycidyl Isocyanurate
Flow Agent	ResiflowP67
Degassing Agent	Benzoin
25% TiO ₂	Kronos 2160
5% BaSO ₄	Sachtleben Blanc Fixe Micro
TiO ₂ Composite Pigment	

Processing Conditions
Premix:8 seconds Vitamix at low setting
Extrusion: APV 19mm twin screw extruder
Zone1:130°C
Zone2:100°C
RPM:500
Torque:30-45%
Chill Rolls:20RPM
Grind: Strand Mill
Sieve:140 mesh(106µm)
Film Thickness: As specified
Bake: 10 minutes at 200°C

Typical Performance - Color

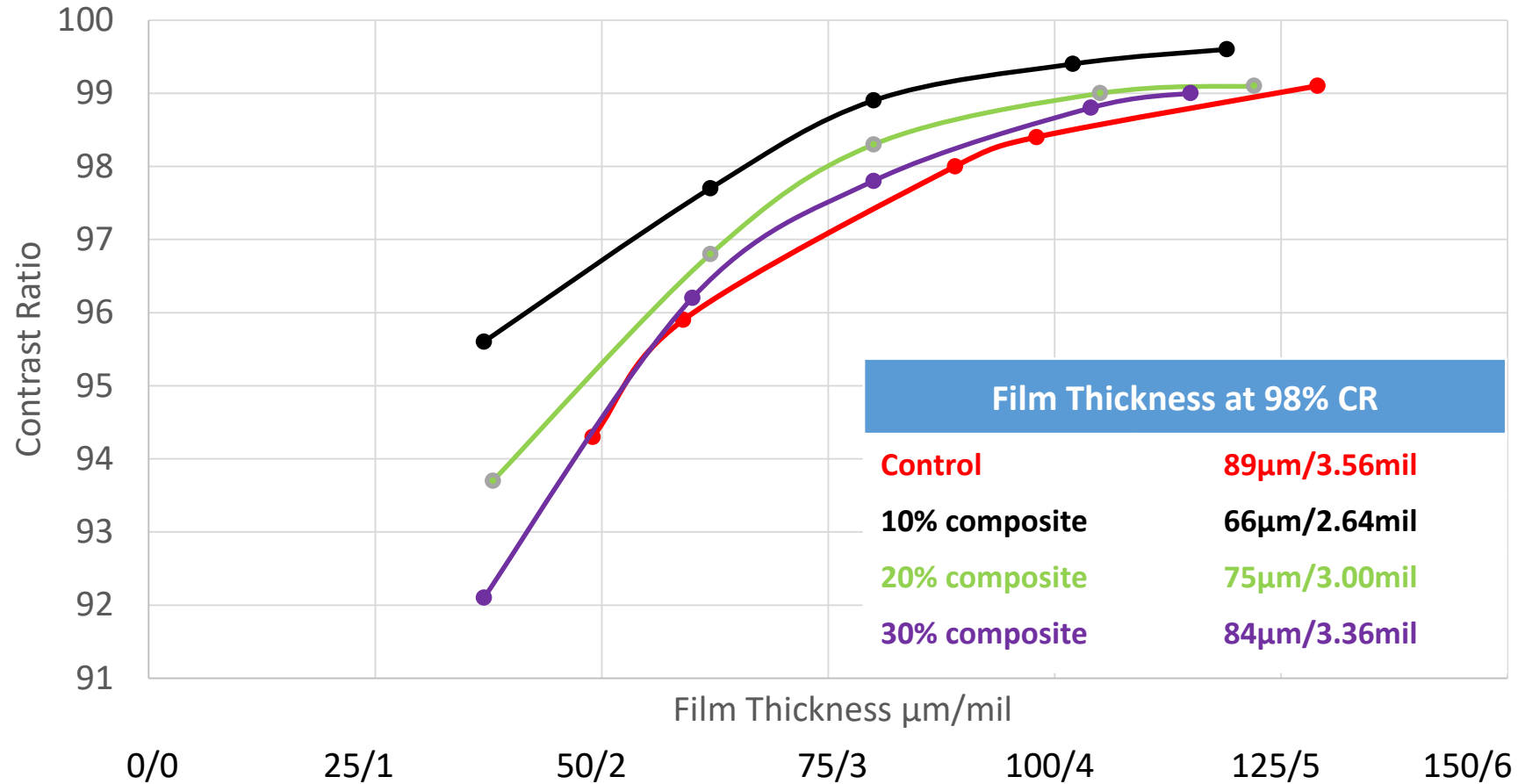


Standard
10% composite
20% composite
30% composite

The use of the TiO₂ composite pigment in powder coatings typically produces a bluer mass tone resulting in a bluer, white coating.

Typical Performance - Opacity

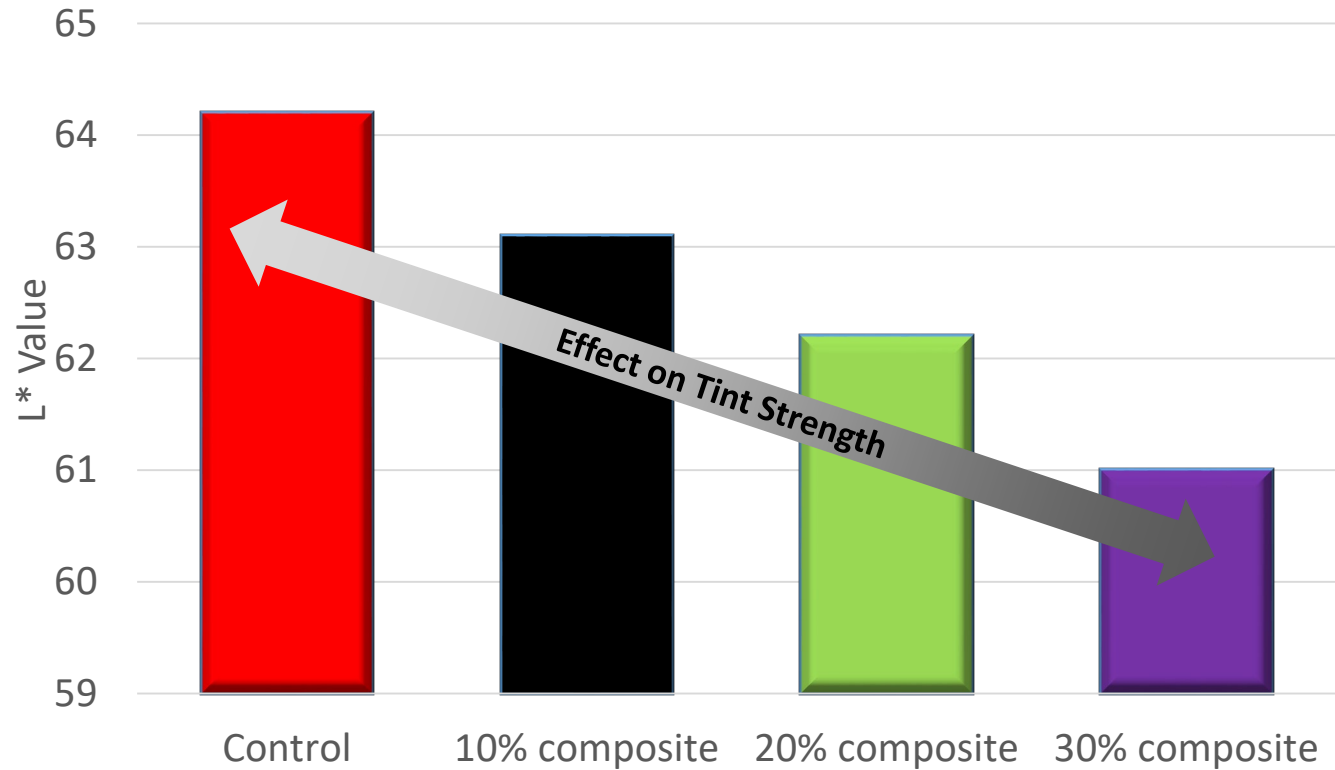
Contrast Ratio in a Polyester/TGIC Powder Coating



Based on Contrast Ratio, a 30% TiO₂ substitution is possible

Typical Performance – Tint Strength

Tint Strength in a Gray Polyester/TGIC Powder Coating*

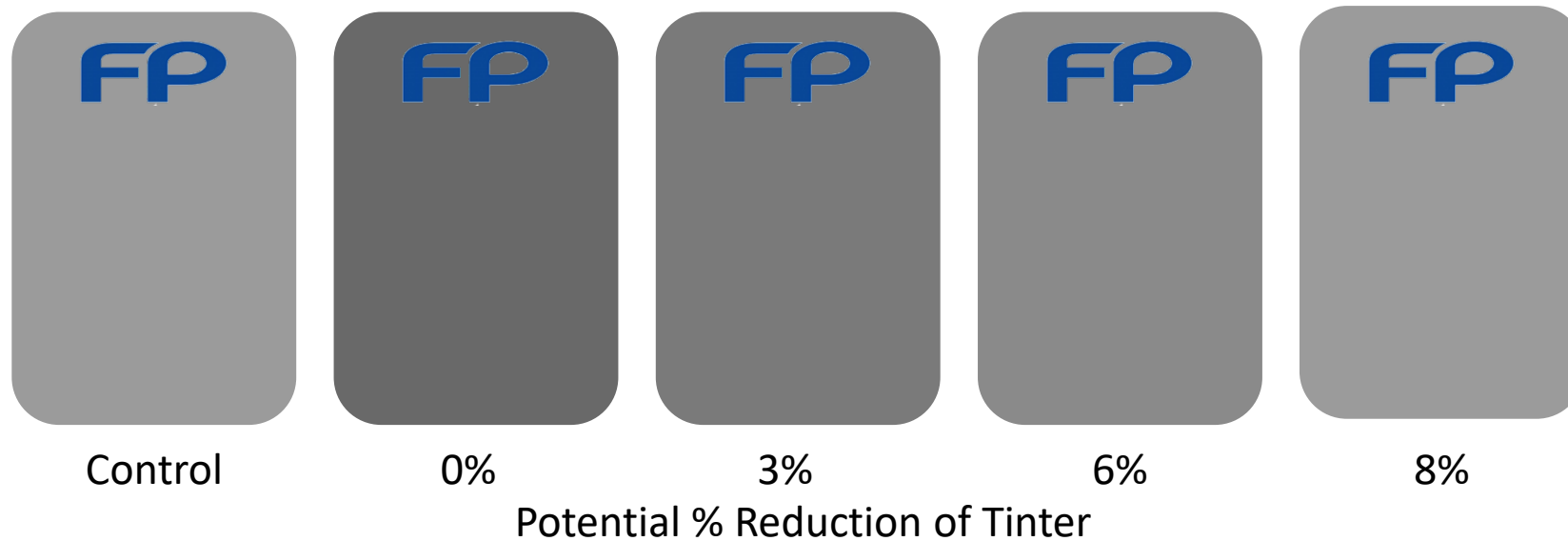


* Control Tint formulation contains
24.00% Blanc Fixe
5.94% Kronos 2160
0.06% Black Pearls 280

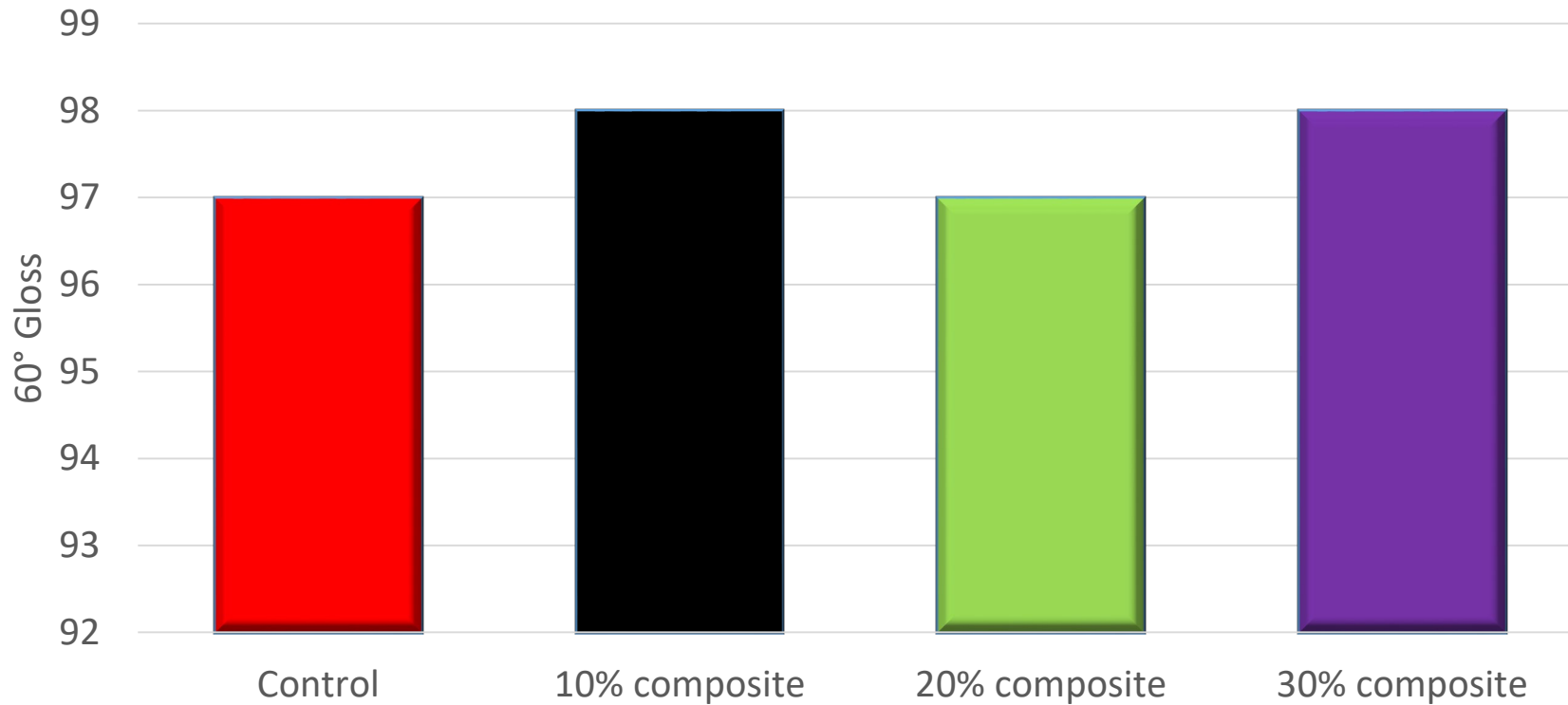
Potential for Colorant Reduction

- 1) Use of the TiO₂ Composite Pigment lowers the total TiO₂ level.
- 2) This new product will have lower tint strength.
- 3) This can be adjusted by reducing the colorant level.

20% TiO₂ Substitution



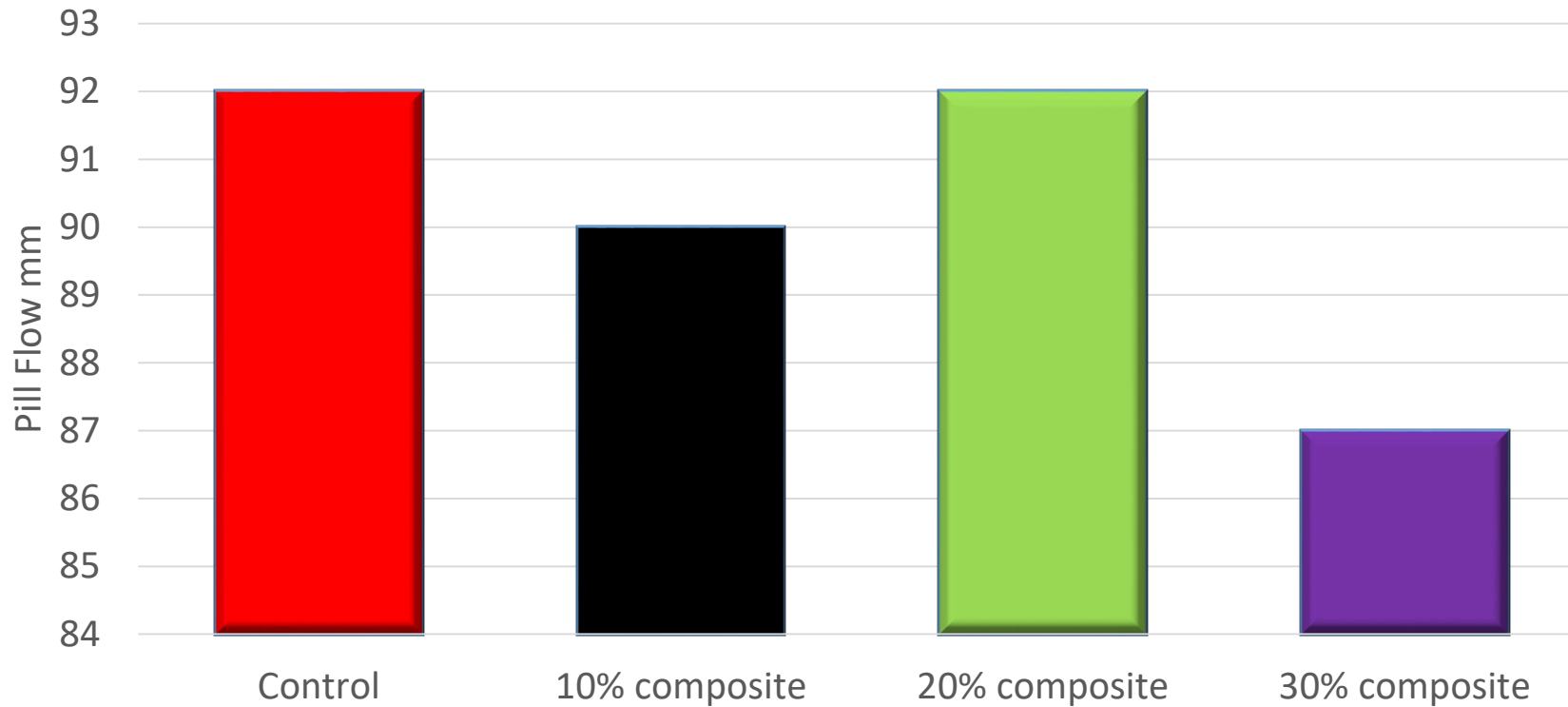
Gloss (60°) in a Polyester/TGIC Powder Coating



No statistical impact on gloss

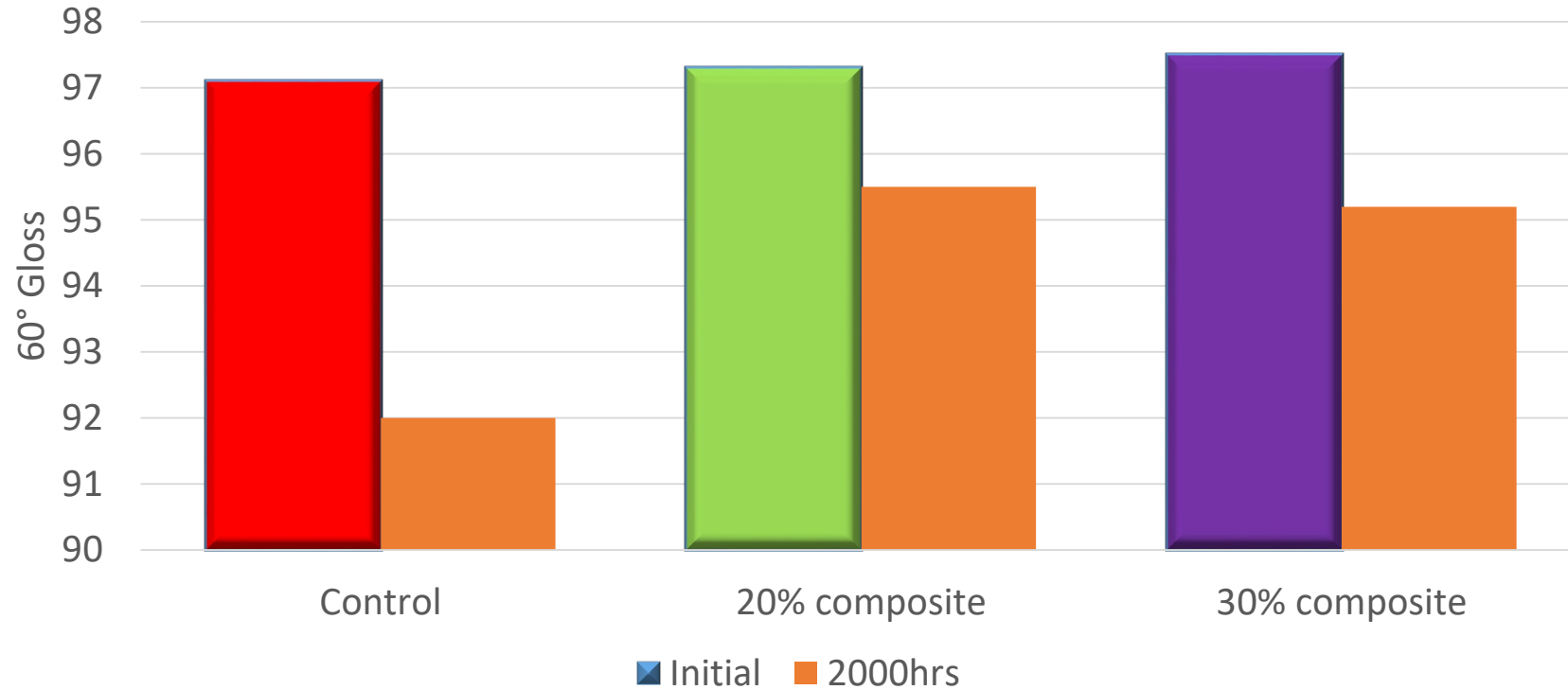
Typical Performance – Pill Flow

Pill Flow (mm) in a Polyester/TGIC Powder Coating



No major differences in pill flow.

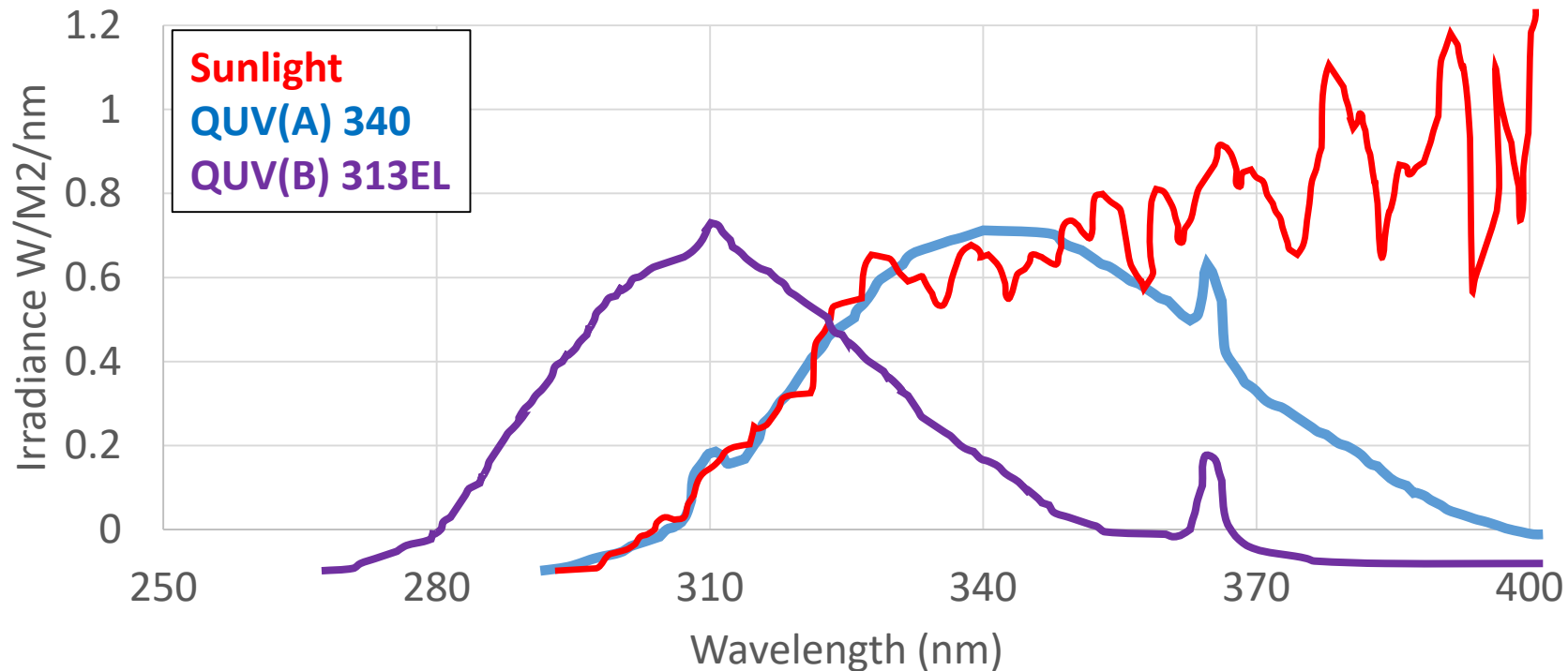
Gloss Retention in Polyester/TGIC Powder Coating QUV(A)



- 1) QUV(A) accelerated testing shows no significant effect on the exterior gloss performance.
- 2) Testing of composite panels with QUV(B) lamps produces variable results often in contradiction to natural Florida weathering.

Comparison of QUV A & B lamp Output

QUV(A) & QUV(B) Lamps Compared to Sunlight



According to Q-Lab*:

UVA 340 lamps are the best available simulation of sunlight in the critical short-wave UV region and usually provide better correlation with actual outdoor weathering.

UVB lamps produce mostly short-wave UV for maximum acceleration, however because all UVB lamps emit unnatural, short-wavelengths of UV that are below the solar cut-off of 295nm, anomalous results can occur.

- These unique TiO₂ Composite Pigments are used around the world to help reduce TiO₂ consumption and produce high quality, lower cost powder coatings.
- TiO₂ Composite Pigments are ideal for interior and general purpose exterior powder coatings, maintaining product performance with reduced TiO₂ levels.
- Typical replacement levels of 10 - 20% are being used across the powder coatings industry in pure and hybrid formulations.

Thank You



FP-Pigments name and Logo are registered trade marks

The information published herein is derived from tests executed by, or on behalf of, FP-Pigments OY, but neither FP-Pigments OY nor any of its affiliate companies makes any warranty or representation as to the accuracy of such information and cannot accept any duty of care, liability or responsibility in respect of any errors or any loss that may be suffered by any party relying upon or making reference to such information. Processes or formulations mentioned are offered as suggestions for experiment and are not guaranteed in any way. Although the existence of patents covering products or processes referred to in publications by or on behalf of FP-Pigments OY are on occasion noted, the absence of such notation is not to be taken as an indication of freedom from patent restrictions and no responsibility or liability will be accepted for any infringement.

Information herein is confidential and no part or parts may be copied or shown to third parties without the prior permission of FP-Pigments OY. Citation of products not made by FP-Pigments OY is offered in good faith and must not be taken to refer to qualities or circumstances other than those specifically mentioned herein.

Supporting files

Coating Measurement

Improved Measurement Accuracy

Several “methods” exist for the measurement of opacity of powder coatings. The most common method involves the following:

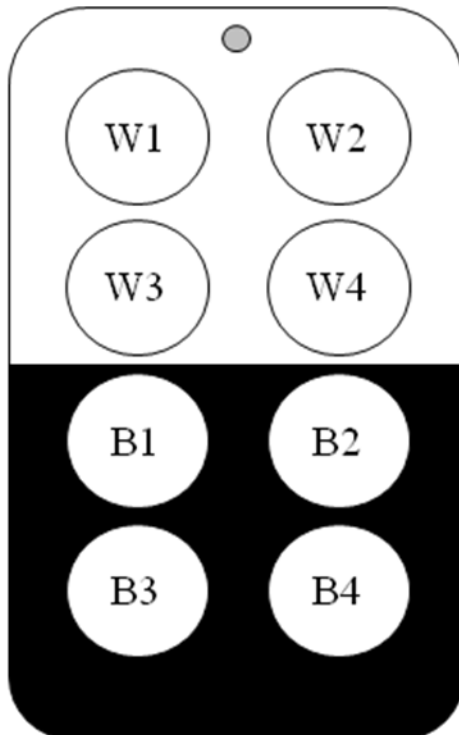
1. spraying of panels to 100 μ m thickness
2. Coatings applied to bare metal panels
3. measuring the L* or Y value over one, two or three areas (and averaging)
4. Measuring the film thickness of the panel often over different areas than the opacity measurement(s)

Unlike liquid coatings, powder panels are never evenly coated, the actual film thickness varying depending on the grind and sieve conditions and the experience of the applicator. Films can vary by as much as $\pm 5\mu$ m (or greater) and this leads to inaccuracies in the opacity measurement of up to ± 1.0 units for an experienced applicator.

Coating Measurement

Improved Measurement Accuracy

To help improve the accuracy of the powder coating measurements, reducing the error from ± 1.0 down to ± 0.5 , the following panels and techniques were used.



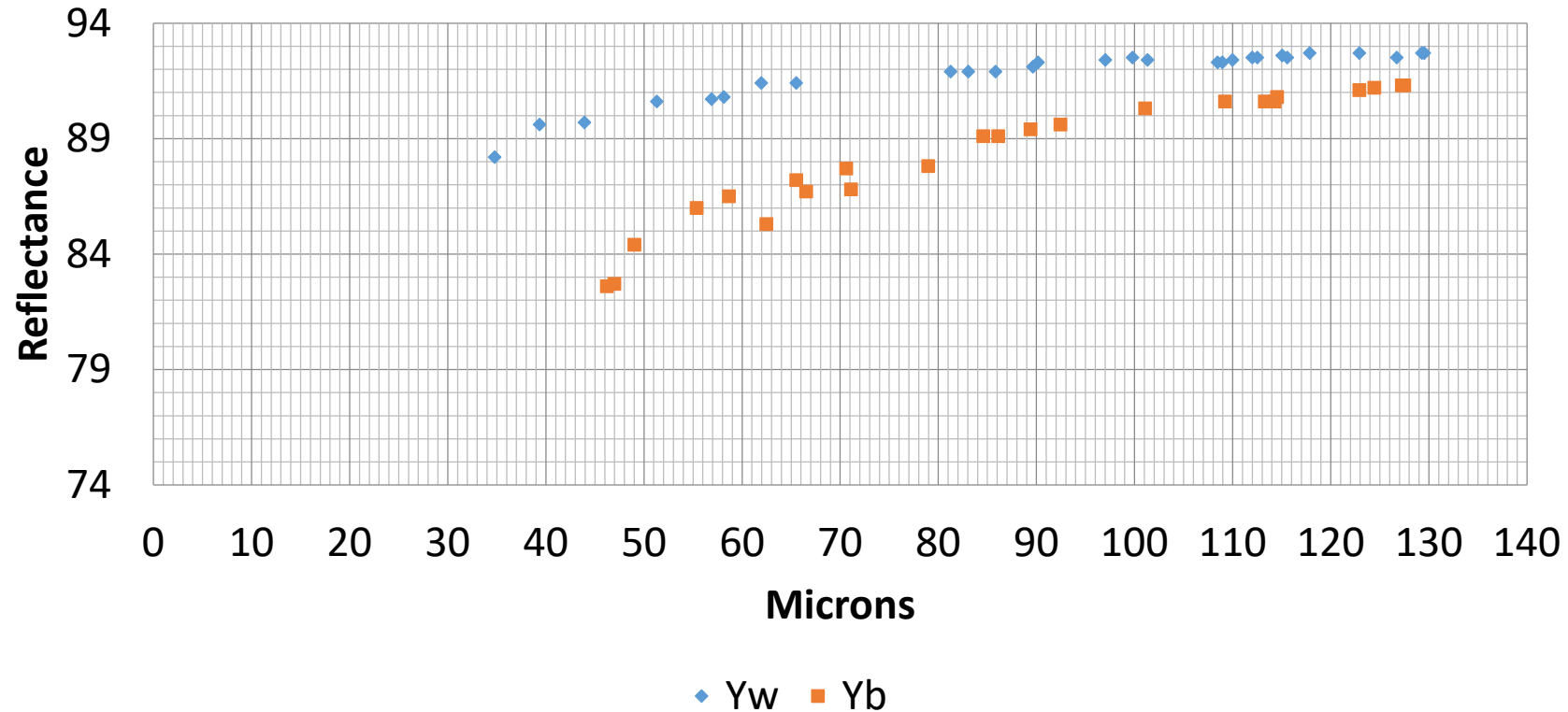
T12G Metopac™ (Metal) Panel

T12G is a black and white metopac™ (metal) panel with overall dimensions of 3 x 5-3/16 in (76 x 132 mm). Measurement of Film thickness of powder coating should be taken following the template below.

The film thickness should be measured at a minimum of 5 points within each circle and averaged for that area. (The film thickness of the existing white and black coatings should also be measured and deducted from the PC thickness)

Reflectance values should be measured over the same circular area giving eight readings per panel. Each reflectance reading should be associated with the average film thickness for that area.

FP-480 10% Replacement



The raw data is plotted and “Best Fit” curves drawn. The curves are used to provide data at 40, 50, 60, 75 and 100 μ m (1.5, 2, 2.5, 3 and 4 mil).