

# RESINS FOR HIGH-PERFORMANCE ROOF COATINGS

Enhancing Your  
Roofing Systems

[epscca.com](http://epscca.com)

**eps**<sup>®</sup>  
ENGINEERED  
POLYMER  
SOLUTIONS *Science  
Simplified*

# HIGH PERFORMANCE FOR YOUR ROOF COATINGS

High-performance coatings are an integral part of your roofing system. As a leader in the architectural, industrial, construction and adhesive markets, Engineered Polymer Solutions (EPS) develops and delivers technology to help you stay proactive and enhance the durability of your roof coatings. As your first line of defense, EPS resins can be formulated to protect against chemical and environmental stresses.



Commercial Basecoat    EPS 2719 SR1    Commercial Topcoat



QUVA Accelerated Testing

## ASPHALT BLEED-THROUGH RESISTANT POLYMER EPS® 2719

Enhance your roof when you apply coatings made with EPS® 2719, an innovative acrylic emulsion designed to eliminate asphalt bleed-through in cool roof coatings, while maintaining flexibility and toughness. Roof coatings based on EPS 2719 also offer UV and dirt pickup resistance, as well as excellent adhesion to asphaltic and other common construction substrates.

### EPS 2719 Features:

- Excellent resistance to bleed-through on fresh or repaired asphalt
- Dirt pickup resistance
- Adhesion to asphalt, PVC, metal, SPF and other common roofing substrates
- UV light resistance
- Excellent toughness with both high tensile strength and elongation
- No APEO containing raw materials
- Used in both basecoat and topcoat formulations

### Specifications

Weight Solids	55.0 +/- 0.7%
Weight/Gallon	8.85 +/- 0.10
pH	8.25 +/- 0.25

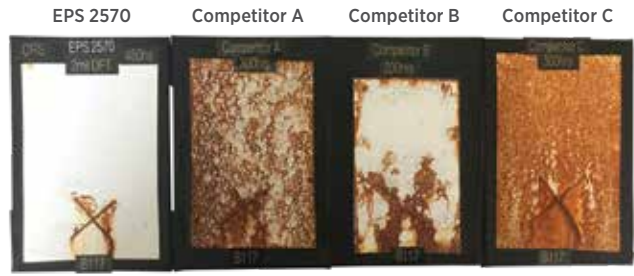
### Typical Properties

Volume Solids	52.1 +/- 0.7%
Tg	-4°C
Volatile(s)	Water (44.84%) Ammonia (0.16%)

### Suggested Formulations

EPS 2719 SR1 - White Roof Coating

The data on this sheet represents typical values. Since application variables are a major factor in product performance, this information should serve only as a general guide. EPS assumes no obligation or liability for use of this information. UNLESS EPS AGREES OTHERWISE IN WRITING, EPS MAKES NO WARRANTIES, EXPRESS OR IMPLIED, AND DISCLAIMS ALL IMPLIED WARRANTIES INCLUDING WARRANTIES OF MERCHANTABILITY OR FITNESS FOR A PARTICULAR USE OR FREEDOM FROM PATENT INFRINGEMENT. EPS WILL NOT BE LIABLE FOR ANY SPECIAL, INCIDENTAL, OR CONSEQUENTIAL DAMAGES. Your only remedy for any defect in this product is the replacement of the defective product, or a refund of its purchase price, at our option.      Revision Date 10/2019



ASTM B117 Salt Fog Corrosion Resistance

## CORROSION AND CHEMICAL RESISTANT POLYMER EPS® 2570

EPS® 2570 can be formulated to improve your protective roof coatings. This self-crosslinking acrylic emulsion offers corrosion, chemical and early water resistance, in addition to excellent gloss and rapid hardness development. EPS 2570 provides the capability to formulate coatings at <100g/L VOC.

### EPS 2570 Features:

- Early hardness development and early hot block resistance
- Adhesion to ferrous and nonferrous metals
- Resistance to corrosion, chemicals and UV light
- Abrasion and scrub resistance
- Mandrel bend flexibility
- Forward and reverse impact resistance
- No APEO containing raw materials

### Specifications

Weight Solids	48.0 +/- 0.7%
Weight/Gallon	8.60 +/- 0.1
pH	8.0-9.0

### Typical Properties

Volume Solids	45.0 +/- 0.7%
MFFT	42°C
Volatile(s)	Water

### Suggested Coalescing Solvent(s)

(% Solvent on Binder Solids - Pass 40°F LTC Test)

DPnB	10-15%
------	--------

### Suggested Formulations

- EPS 2570 WHT SP-1 - White High Gloss Enamel
- EPS 2570 WHT SP-2 - White High Gloss Enamel



## LOW SURFACE ENERGY ADHESION POLYMER New EPS® 2252

EPS® 2252 is a high-solids acrylic emulsion designed to adhere to low energy substrates commonly used in roofing, and provides the capability to formulate coatings at <50 g/L VOC. Basecoats and primers based on EPS 2252 have excellent adhesion to TPO, EPDM, metal, asphalt and other common roofing substrates.

### Specifications

Weight Solids	60.0 +/- 0.70%
Weight/Gallon	8.55 +/- 0.10
pH	8.0-9.0

### Typical Properties

Volume Solids	59.0 +/- 0.7%
Tg	-32°C
Volatile(s)	Water Ammonia



## Unmatched Technical Insight Into Coatings

Engineered Polymer Solutions (EPS) provides performance-based resins and colorants specifically designed for the architectural, industrial, construction and adhesive industries. With a personalized approach, innovative technology and exceptional technical service - we make doing business with us easy.

Our R&D experts create the products of the future, supporting new opportunities for customers. The proprietary technology in our polymers enables our customers to develop coatings with essential features - including

excellent adhesion to multiple substrates, as well as abrasion, block and early water resistance. As a global manufacturer of CCA colorants to the consumer paints and industrial coatings industries, we offer a broad colorant technology portfolio for both POS and In-Plant OEM clients.

We are committed to understanding our customers' needs and helping them to succeed. Formulate all of your architectural, industrial, construction and adhesive products with the wide range of acrylic emulsions, conventional resins and colorants supplied by EPS.

**Business made easy, science made simple.**  
**To learn more, visit [epscca.com](http://epscca.com)**